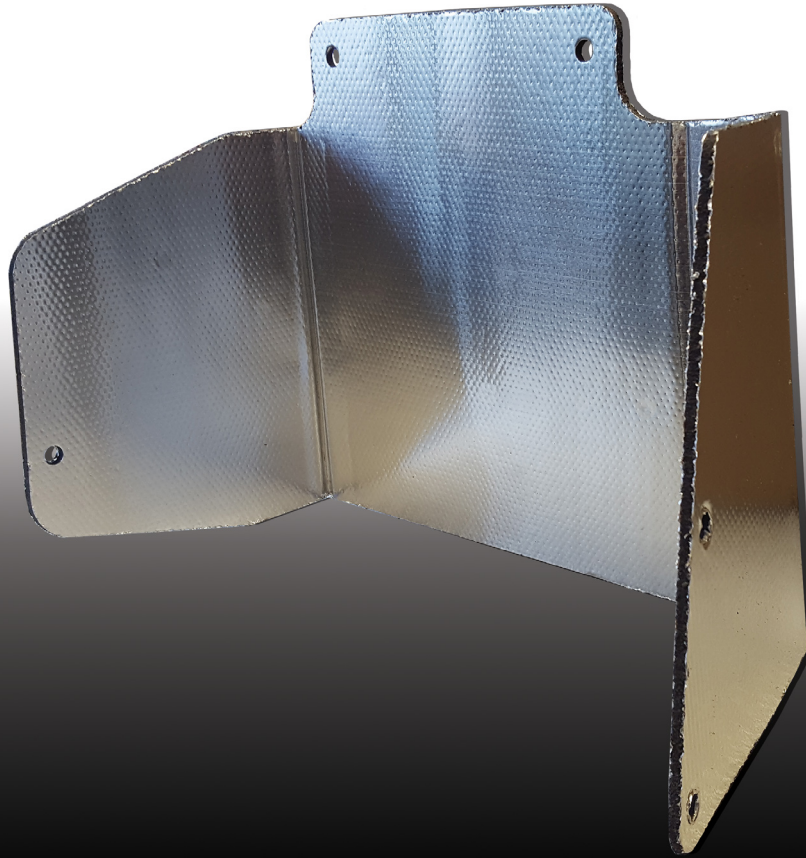




Constantly seeking better ways to be the best®

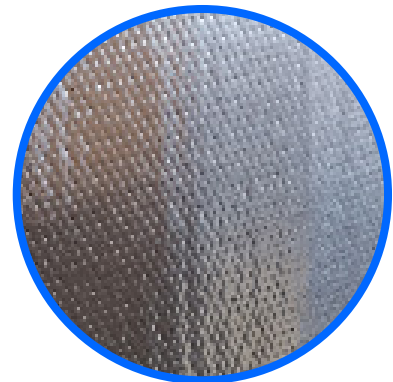


MilShield

MilShield is a light-weight, highly formable, resilient heat shield solution. MilShield provides thermal protection for interior applications, yet is resilient enough to provide protection for exterior automotive conditions. It is very effective at reducing thermal loads in areas with high heat sources where little space is available. MilShield can be easily attached via pins, projection studs and mechanical fasteners. It is also available with pressure sensitive adhesive on one side. MilShield is able to withstand up to 1300°F.

TYPICAL APPLICATIONS:

- Engine or Muffler Baffles
- Firewall Protection
- Interior Thermal Protection

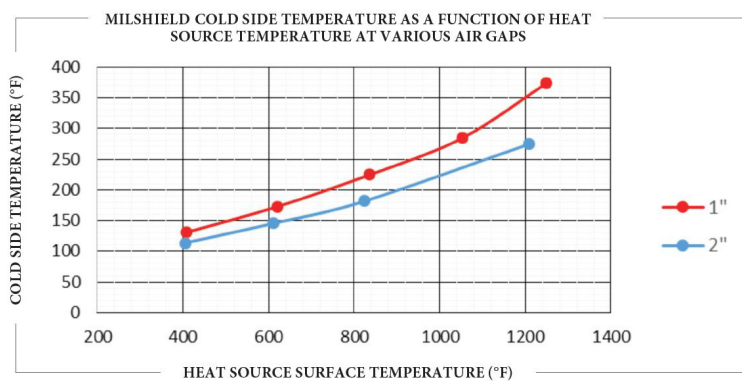


Typical Physical Properties

Physical Property	Test Method	Typical Results
Description		Aluminum / Foam / Aluminum or Aluminum / Foam / Adhesive
Surface Density	ASTM D3776	1000 g/m ²
Total Composite Thickness		4.0 mm
Aluminum Thickness		5.0 mil
Foam Type		Polyurethane
Flammability	FMVSS 302 UL 94 UL 2200	Pass HBF Pass
Thermal Conductivity, 20°C		0.032 W/m-K
Reagent Resistance	Results based on 4 hour immersion	
Motor Oil		Pass
Antifreeze		Pass
Brake Fluid		Pass
Power Steering Fluid		Pass
Transmission Fluid		Pass
Washer Fluid		Pass

Tolerance ± 10%

Aluminum/Foam/Aluminum MilShield



Aluminum/Foam/Adhesive MilShield

